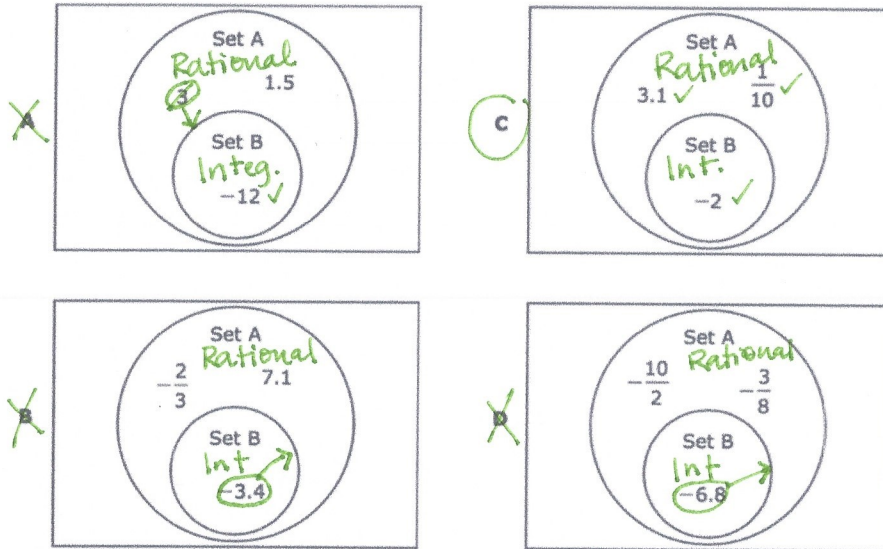


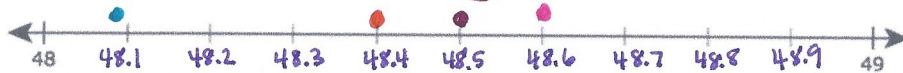
6th Grade Advanced 1st Six Weeks Test Review

Name: Answer Key

- 1) Set A represents rational numbers. Set B represents integers. Which diagram shows the numbers placed in the correct sets?



- 2) Alyssa will correctly label the numbers 48.4, $48\frac{1}{2}$, 48.09 and $48\frac{3}{5}$ on the number line below.



Which number will be located closest to 49?

A 48.4 closer to 48

B $48\frac{1}{2}$ in middle

C 48.09 smallest, closest to 48

D $48\frac{3}{5}$

$$48\frac{1}{2} = 48.5$$

$$48\frac{3}{5} = 48.6$$

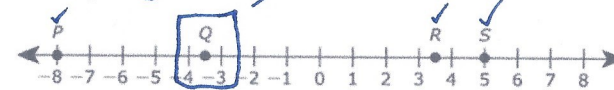
- 3) Dana placed the following points on a number line.

• Point P at $-\frac{24}{3} = -8$

• Point Q at $-\frac{9}{2} = -4\frac{1}{2}$

• Point R at $\frac{7}{2} = 3.5$

• Point S at $\frac{15}{3} = 5$



this point is on -3.5, not -4.5

Which point is NOT correctly placed on this number line?

F Point P

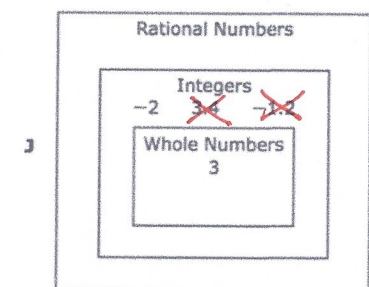
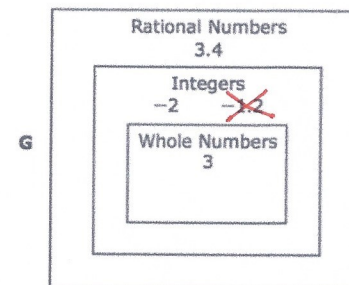
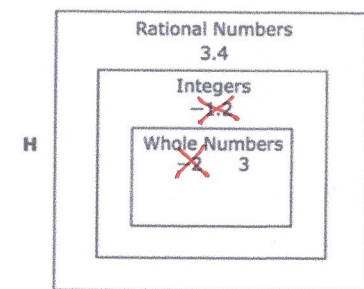
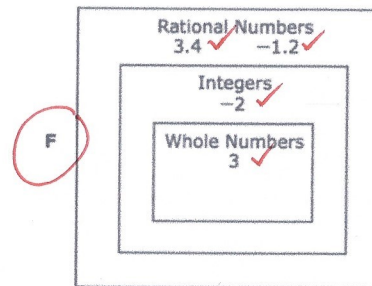
G Point Q

H Point R

J Point S

- 4) Which graphic organizer correctly groups the following numbers?

R I W R
3.4 -2 3 -1.2



- 5) Students in Mrs. Guerro's class must complete at least 40 math problems for homework every week. The table shows the progress of four students on Wednesday.

Homework Progress

Student	Amount Completed
Katie	0.4
D'Angelo	$\frac{45}{40}$
Grace	100%
Jonah	$\frac{2}{3}$

$$\begin{array}{r} 1.125 \\ 40 \overline{) 45.000} \\ \underline{-40} \\ 50 \\ \underline{-40} \\ 100 \\ \underline{-80} \\ 200 \end{array}$$

0.4 (1)
1.125 (4)
1.00 (3)
0.666 (2)

Which list shows the amounts of homework completed in order from greatest to least?

~~A~~ $0.4, \frac{2}{3}, \frac{45}{40}, 100\%$

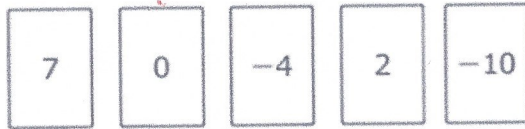
~~B~~ $\frac{45}{40}, 100\%, \frac{2}{3}, 0.4$ ← g to L

C $0.4, \frac{2}{3}, 100\%, \frac{45}{40}$

~~D~~ $\frac{2}{3}, 0.4, \frac{45}{40}, 100\%$

$$\begin{array}{r} 0.666... \\ 3 \overline{) 2.00} \\ \underline{-18} \\ 20 \\ \underline{-18} \\ 2 \end{array}$$

- 6) Ella played a math game and had the five cards shown.



Her score was the sum of the numbers on these five cards. What was Ella's score?

- A 3
B 23
C -5
D Not here

$$\begin{array}{l} 7 + 0 + (-4) + 2 + (-10) \\ 7 + (-4) + 2 + (-10) \\ 3 + 2 + (-10) \\ 5 + (-10) \\ -5 \end{array}$$

- 7) Elida will use six different wires for a science project. The fractions represent the diameters of these wires in inches.

$$\frac{7}{16}, \frac{1}{2}, \frac{3}{8}, \frac{9}{32}, \frac{5}{16}, \frac{15}{32}$$

Find common denominators

Which list shows the diameters of the wires in order from least to greatest?

~~X~~ $\frac{1}{2}, \frac{3}{8}, \frac{7}{16}, \frac{5}{16}, \frac{15}{32}, \frac{9}{32}$

G $\frac{9}{32}, \frac{15}{32}, \frac{5}{16}, \frac{7}{16}, \frac{3}{8}, \frac{1}{2}$

~~X~~ $\frac{1}{2}, \frac{3}{8}, \frac{5}{16}, \frac{7}{16}, \frac{9}{32}, \frac{15}{32}$

J $\frac{9}{32}, \frac{5}{16}, \frac{3}{8}, \frac{7}{16}, \frac{15}{32}, \frac{1}{2}$

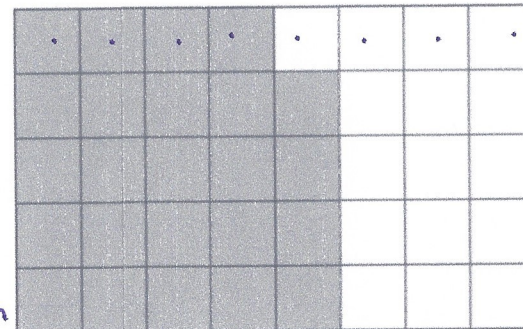
$$\frac{7 \times 2}{16 \times 2}, \frac{1 \times 16}{2 \times 16}, \frac{3 \times 4}{8 \times 4}, \frac{9}{32}, \frac{5 \times 2}{16 \times 2}, \frac{15}{32}$$

$$\frac{14}{32}, \frac{16}{32}, \frac{12}{32}, \frac{9}{32}, \frac{10}{32}, \frac{15}{32}$$

(4) (6) (3) (1) (2) (5)

- 8) The shaded area on the grid represents the part of a rectangular wall that was painted. Each small square on the wall has the same dimensions.

Also, eliminate wrong answers b/c there is more than half shaded, so B and D can not be correct



40 total squares
24 shaded

What percentage of the wall was painted?

- A 64%
B 24%
C 60%
D 16%

$$\frac{24}{40} = \frac{6}{10} = 0.6 = 60\%$$

- 9) Which list shows the temperatures in order from coldest to warmest in degrees Fahrenheit?

- A -10°F 8°F -5°F 0°F
B -5°F -10°F 0°F 8°F
C -10°F -5°F 0°F 8°F
D 0°F -5°F 8°F -10°F



10) This shaded model represents 100%.



$$33\frac{1}{3}\% = \frac{1}{3}$$

Which model represents $33\frac{1}{3}\%$?

A = $\frac{3}{10} = \frac{30}{100} = 30\%$

B B shows $333\frac{1}{3}\%$

C = $\frac{1}{3}$

D D shows $333\frac{1}{3}\%$

11) A company spent 32% of its annual budget developing a new machine. What fraction of the company's budget was spent developing the new machine?

F $\frac{1}{32}$

G $\frac{5}{16}$

H $\frac{8}{25}$

J $\frac{4}{125}$

$$32\% = \frac{32 \div 4}{100 \div 4} = \frac{8}{25}$$

12) A farmer watered $\frac{3}{8}$ of a field. What percentage is equivalent to the fraction of the field the farmer watered?

$$\frac{3}{8} = ?\%$$

A 24.00%

B 37.50%

C 8.30%

D 3.75%

$$8 \overline{) 3.000} = 0.375 = 37.5\%$$

13)

A meteorologist at a television station reported that a town received 0.95 in. of rain. Which fraction is equivalent to this amount of rain in inches?

F $\frac{19}{50}$ in. = $\frac{38}{100} = 0.38$

$$0.95 = \frac{95 \div 5}{100 \div 5} = \frac{19}{20}$$

G $\frac{19}{20}$ in.

H $\frac{95}{10}$ in. = 9.5

J $\frac{9}{5}$ in. = 1.8

14)

simplify!

A restaurant offered cooking classes on 24 of the 30 days in November. What decimal is equivalent to the fraction of days in November that classes were offered at the restaurant?

$$\frac{24 \div 3}{30 \div 3} = \frac{8}{10} = \boxed{0.8}$$

you could also divide $30 \overline{) 24.0} = 0.8$

15)

A team of four players competed in a golf contest. The names and scores of the players on the team are shown in the table. The team's score is the sum of all the scores in the table.

Golf Scores

Player	Score
Brett	-2
Elliott	+3
Lin	-4
Tyrone	-1

What is the team's score?

F 10

G -10

H -4

J Not here

$$-2 + 3 + (-4) + (-1)$$

$$1 + (-4) + (-1)$$

$$-3 + (-1)$$

$$-4$$

16) LuAnn is playing a math game. She chooses three cards. The value of each of her cards is shown.

- First card: -12
- Second card: 3
- Third card: -5

$$-12 + (3) + (-5)$$

$$-9 + (-5) = -14$$

What is the sum of the values of LuAnn's three cards?

-14

17) The table shows the portion of a day four students used to build a website.

Time Used

Student	Portion of Day
Jamail (3)	29.4%
Andrew (1)	37.6%
Ernesto (4)	$\frac{7}{25} = \frac{28}{100}$ 28%
Blake (2)	$\frac{3}{10} = \frac{30}{100}$ 30%

Which list shows the students in order from the greatest amount of time used to the least amount of time used?

- F Andrew, Blake, Jamail, Ernesto
- Blake, Andrew, Jamail, Ernesto
- Ernesto, Blake, Andrew, Jamail
- J Andrew, Jamail, Ernesto, Blake

18) Which list shows the numbers in order from least value to greatest value?

F $-\frac{2}{5}$ -2.47 $-2\frac{1}{2}$ 5 $\frac{21}{4}$

G $-\frac{2}{5}$ -2.47 $-2\frac{1}{2}$ $\frac{21}{4}$ 5

H $-2\frac{1}{2}$ -2.47 $-\frac{2}{5}$ 5 $\frac{21}{4}$

J $-2\frac{1}{2}$ -2.47 $-\frac{2}{5}$ $\frac{21}{4}$ 5

$-\frac{2}{5} = -0.4$ (3)

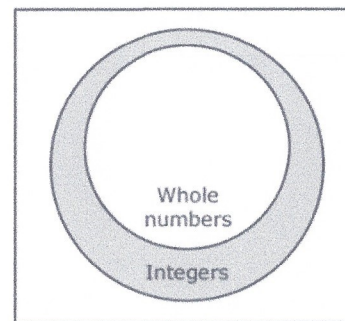
$-2\frac{1}{2} = -2.5$ (1) smallest

-2.47 (2)

5 (4)

$\frac{21}{4} = 5.25$ (5) largest

19) The Venn diagram shows the relationships among different sets of numbers.



Which number would be located in the shaded part of the diagram?

F -1.7 - Rational

G -8 - Integer

H $\frac{2}{3}$ -rational

J 10 -whole

20) Complete the table.

Fraction	Decimal	Percent
$\frac{16}{10} = \frac{8}{5}$	1.6	160%
$\frac{65}{100} = \frac{13}{20}$	0.65	65%
$\frac{1}{3}$	$0.\bar{3}$	33.3% or $33\frac{1}{3}\%$
$\frac{375}{1000} = \frac{3}{8}$	0.375	37.5%
$\frac{9}{20}$	$\frac{9}{20} = \frac{45}{100} = 0.45$	45%
$\frac{125}{100} = \frac{5}{4}$	1.25	125%